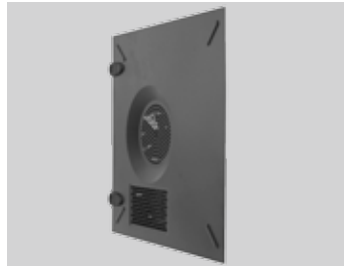
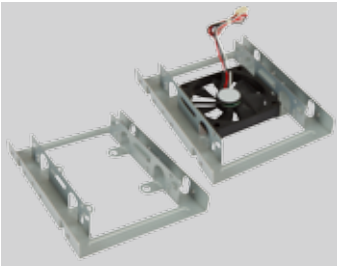


# Z SERIES mATX CHASSIS



## Features

### TAC 2.0 Thermal Solution

Qualified for TAC 2.0, a mass ventilation hole side panel design strengthens thermal efficiency and cools down the entire system.

### Cooling Fan

Optional 90mm auxiliary cooling fan at rear panel for better system cooling.

### Tool-Free Installation and Easy Maintenance

Tool-free front panel, drive bays and I/O slots.

### Side Panel Clips

The patented tool free installation side panel clips.

### Stamped Motherboard Support

No MB standoffs installation required for faster MB installation.

### Folded Edge

For safety installation. No sharp edges and debris.



# Z SERIES

## mATX CHASSIS



\* Available in Selected Regions Only



\* Available in Selected Regions Only



\* Available in Selected Regions Only

## Specifications

|                            |   |
|----------------------------|---|
| <b>Case Size</b>           | Mini Tower Chassis  |
| <b>External Drive Bays</b> | 5.25" x 2, 3.5" x 2 (Z670: 5.25" x 2, 3.5" x 1)   |
| <b>Internal Drive Bays</b> | 3.5" x 1, 2.5" x 1 (Z670: 3.5" x 2, 2.5" x 1)   |
| <b>Front Ports</b>         | USB2.0 x 2, HD Audio  |
| <b>Dimensions (HxWxD)</b>  | 363 x 180 x 370mm   |
| <b>w/o Front Panel</b>     | 14.3" x 7.1" x 14.6"  |
| <b>MB Form Factor</b>      | Micro-ATX, Mini-ITX   |
| <b>I/O Expansion Slots</b> | PCI-E Expansion Slot x 4  |
| <b>Power Supply</b>        | ATX 12V Form Factor, PSII Size  |
| <b>Thermal Solution</b>    | • Supports 80mm or 90mm Rear Fan • Intel Certified TAC 2.0  |
| <b>Safety</b>              | Meets RoHS, CE and FCC Class B Requirements   |
| <b>Security</b>            | Padlock Loop / Kensington Slot  |
| <b>Optional</b>            | • 80 or 90mm Rear Fan • eSATA<br>• Chassis Intrusion Switch • USB 3.0 x 2<br>• 3.5" to 2.5" HDD/SSD Bracket |

\* The actual product is subject to change without prior notice. In Win Development Inc. reserves the right to make final modifications.

# Z SERIES mATX CHASSIS



**Z589** ■ □



**Z616** ■ □

\* Available in Selected Regions Only



**Z638** ■ ■



**Z583** ■ □



**Z611** ■



**Z637** ■ ■

