

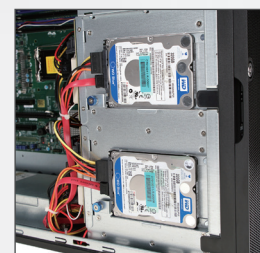
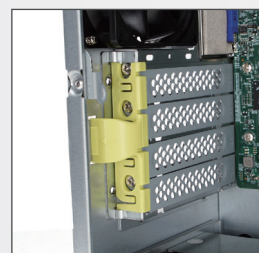
# IW-MS08

8 Bays Mini Server Tower



## Features & Benefits

- Compatible with the Micro-ATX and Mini-ITX for mini tower cases
- Up to 12 storages support 10 hot-swap bays and 2 HDD brackets
- File servers and NAS devices usage
- Supports 4 full height PCIe slots
- High efficiency gold level redundant power supplies
- Lockable front magnetic door for hardware security



## Specifications

<b>M/B Form Factor</b>	Micro-ATX (9.6" x 9.6"), Mini-ITX (6.7" x 6.7")
<b>Dimensions (D x W x H) w/o Front Door</b>	513 x 170 x 340 mm (20.2" x 6.7" x 13.4")
<b>Drive Bay</b>	External: Slim ODD x 1 Hot-swap 3.5" x 8 Hot-swap 2.5" x 2 for OS (optional) Internal: 2.5" x 2
<b>Power Supply</b>	Supports Form Factor: 1U redundant 300W 1U single 500W 1U Flex 315W
<b>Indicator</b>	Power LED, LAN1/LAN2 LED, System LED, ID LED, HDD LED
<b>Front Control Panel</b>	Power On/Off, Reset, USB3.0 x 2
<b>Backplane</b>	Mini SAS HD/ 12Gb/s x 2 without expander
<b>Cooling Fan</b>	8025mm PWM fan x 4
<b>Expansion Slot</b>	Full height PCI slot x 4
<b>Material</b>	Material : SECC Thickness : 1.0 mm

\* The actual product is subject to change without prior notice. In Win Development Inc. reserves the right to make any final modifications.

\* The above image is for reference only. All hardware components are not included.



CONTEMPORARY & INNOVATIVE  
www.in-win.com