

# IW- PE689

## Pedestal Entry Server Chassis



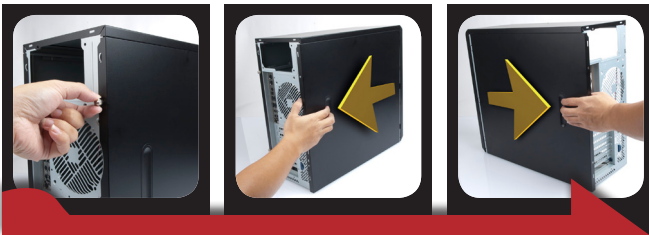
(Please read the following steps to assemble)  
Please note that the pictures in this installation guide are for your reference only, and they may vary from the actual product.

### Installation Guide

= Opening the Chassis =

#### 1.Remove the Side Covers

Unscrew the Thumb screws and remove both side covers.



#### 2.Remove the Front Panel

Unlock the locking tabs and remove the front panel.



IN WIN

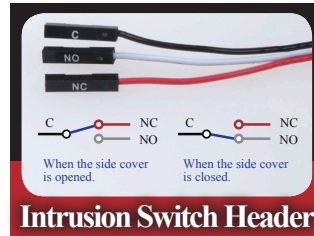
CONTEMPORARY & INNOVATIVE  
[www.in-win.com](http://www.in-win.com)

# IW- PE689

## Pedestal Entry Server Chassis

### = Power Supply Installation =

3. Insert the power supply to the chassis with the power supply fan facing down. Use the mounting screws to secure the position.



Intrusion Switch Header

### = Motherboard Installation =

4. Please follow M/B Installation Guide to connect power cables to M/B.



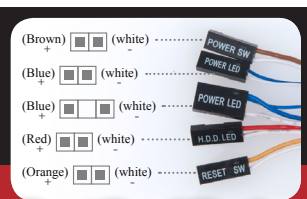
### = 5.25 ODD Installation =

6. Pull the "ODD Secure Clips", put the 5.25" optical drive in and then press the clips. Refer from the M/B Quick Reference and Manual to connect the signal cable and power cable.

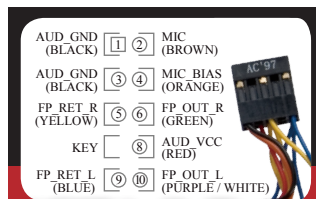


### = Front I/O Wires Installation =

5. Connect all cables to M/B. (Included USB, HDD LED, HD Audio, Power Switch, Power LED, Reset Switch, Intrusion switch).



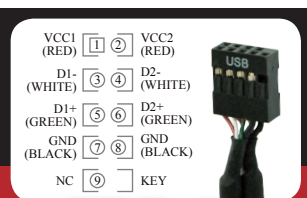
Front Panel Header



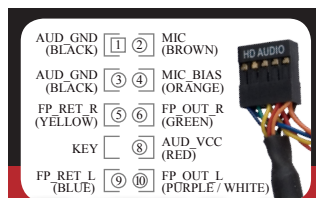
AC'97 Audio Header

### = 3.5" Floppy Installation =

7. Pull the FDD Secure Clips, push the FDD Lock to the left, insert the FDD and press down the clips. Refer from the M/B Guideline to connect the signal cable, and then connect the output power cable.



USB Header



HD AUDIO Header



IN WIN

CONTEMPORARY & INNOVATIVE  
www.in-win.com

# IW- PE689

## Pedestal Entry Server Chassis

### = FAN Installation =

#### 8.Rear Fan installation

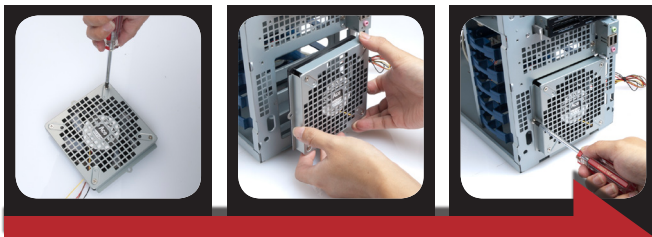
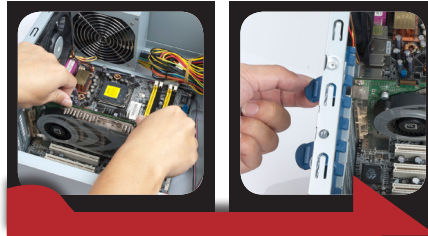
Connect the power cord to the Motherboard.

#### 9.Front FAN Installation (optional)

Unscrew the fan holder.

Put the fan on the fan holder and screw it tightly.

Put the fan holder into server case and screw it tightly. Connect the power cord to the motherboard.



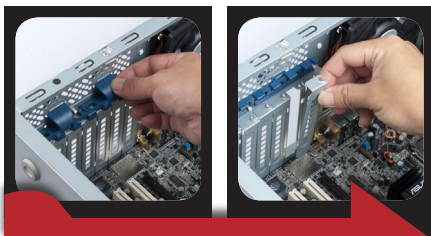
### = Internal 3.5" HDD Installation =

12.Take out the HDD bracket, screw the HDD on the bracket and insert back the HDD Bracket to the case.Refer from the M/B Quick Reference or Manual to connect the signal and power cable.



### = Add-On (PCI/AGP) Card Installation =

10.Press down the tool-free PCI clips and remove the expansion slot cover



11.Install PCI/AGP Card and clip on tool-free I/O slots

### = Panel Installation =

13.Put back the front panel.

14.Put back the side panels and secure them by Thumb Screws



### = Completing Installation =



IN WIN

CONTEMPORARY & INNOVATIVE  
www.in-win.com