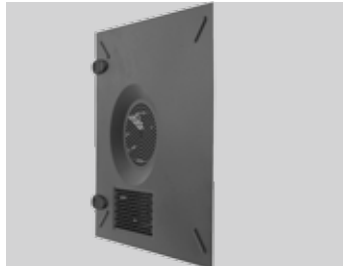
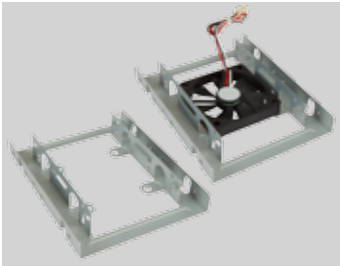


C SERIES mATX CHASSIS



Features

TAC 2.0 Thermal Solution

Qualified for TAC 2.0, a mass ventilation hole side panel design strengthens thermal efficiency and cools down the entire system.

Cooling Fan

Optional 120mm auxiliary cooling fan at rear panel for better system cooling.

Tool-Free Installation and Easy Maintenance

Tool-free front panel, drive bays and I/O slots.

Swiveled HDD Cage

Side Panel Clips

The patented tool-free installation side panel clip.

Stamped Motherboard Support

No MB standoffs installation required for faster MB installation.

Folded Edge

For safety installation. No sharp edges and debris.



C SERIES

mATX CHASSIS



Specifications

Case Size	Mid Tower Chassis
External Drive Bays	5.25" x 3, 3.5" x 2
Internal Drive Bays	3.5" x 3, 2.5" x 1
Front Ports	USB2.0 x 2, HD Audio
Dimensions (HxWxD)	423 x 190 x 435mm
w/o Front Panel	16.7" x 7.5" x 17.1"
MB Form Factor	ATX, Micro-ATX
I/O Expansion Slots	PCI-E Expansion Slot x 7
Power Supply	ATX 12V Form Factor, PSII Size
Thermal Solution	<ul style="list-style-type: none"> • Intel Certified TAC 2.0 • Supports 90 or 120mm Rear Fan
Safety	Meets RoHS, CE and FCC Class B Requirements
Security	Padlock Loop / Kensington Slot
Optional	<ul style="list-style-type: none"> • 90 or 120mm Rear Fan • eSATA • IEEE 1394 • Chassis Intrusion Switch • USB 3.0 x 2 • 3.5" to 2.5" HDD/SSD Bracket

* The actual product is subject to change without prior notice. In Win Development Inc. reserves the right to make final modifications.

