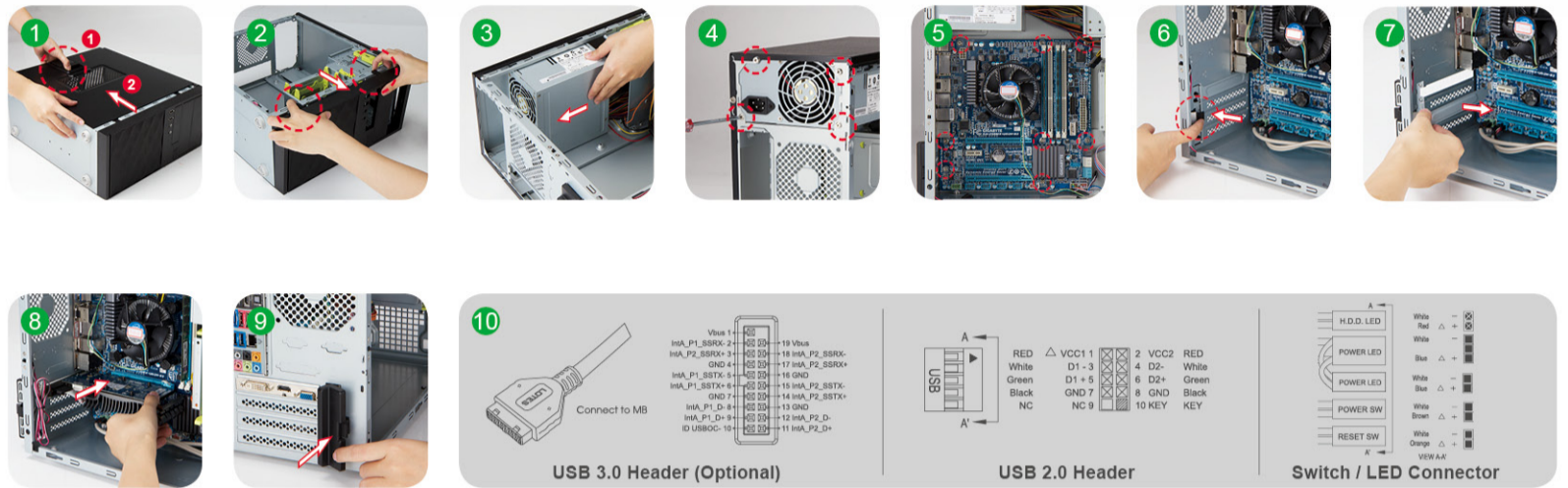




EFS Series Installation Guide

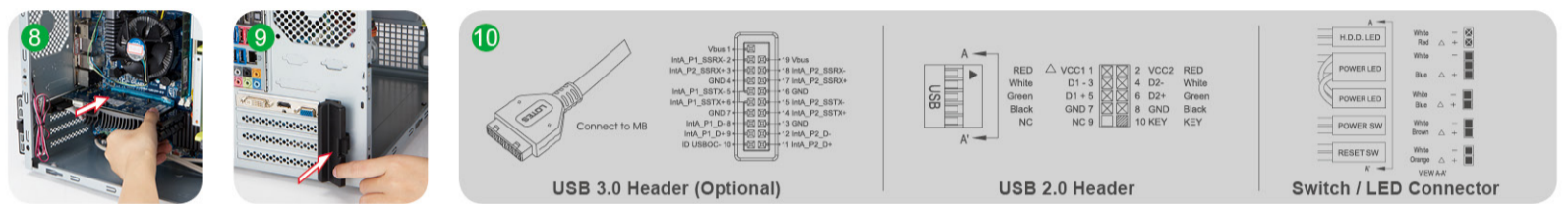
(Please read the following steps to assemble)

Please note that the pictures in this installation guide are for reference only, and may vary from the actual product.



【Opening the Chassis】

1. Removing the Side Panel
Pull the One Touch Release clip to remove the side panel. **1**
2. Removing the Front Panel
Unlock the locking tabs and remove the front panel. **2**



【Power Supply Installation】

3. With its fan facing down, insert the power supply into the chassis and secure it with the screws. **3 4**

【Motherboard Installation】

4. Follow the MB Installation Guide to install and connect the power cables to the MB. **5**
5. Equip I/O-shield, Motherboard, CPU, Memory and heat sink.

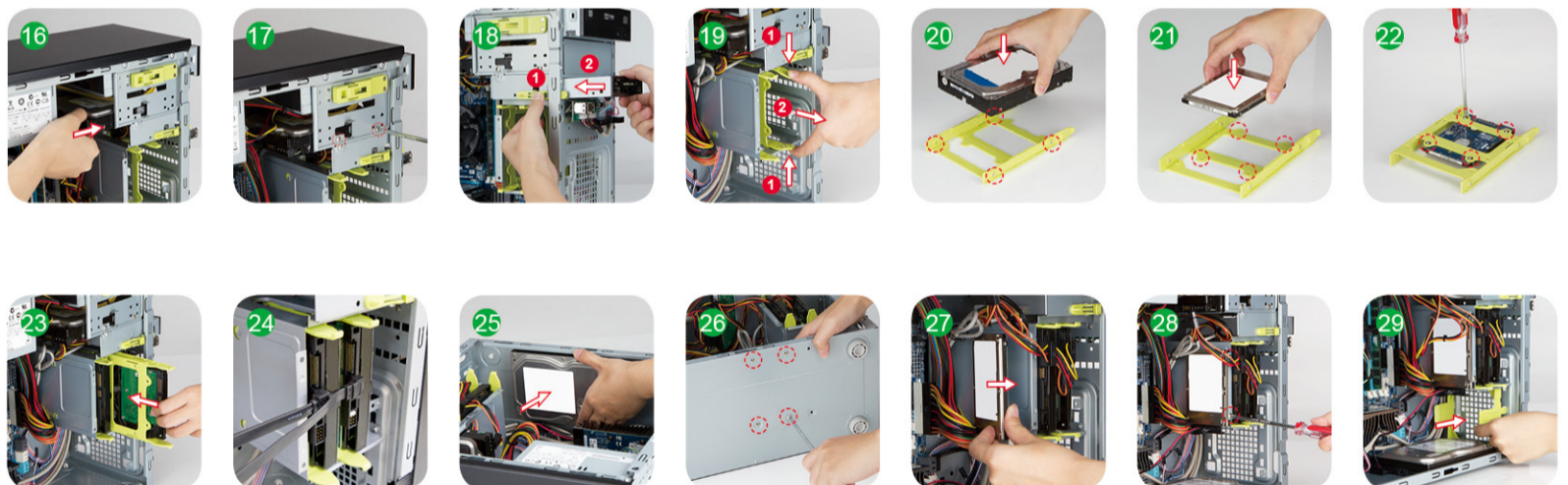


【Add-on Card (PCI-E) Installation】

6. Press the locking clip and remove the I/O slot cover. **6 7**
7. Equip Add-on cards. **8**
8. Lock the locking clip. **9**

【Front I/O Wires Installation】

9. Connect cables to the MB. **10 11**



【5.25" Drive Bay Installation】

10. Tool-Free 5.25" Drive Bay
Slide the ODD into the top 5.25" drive bay, and push the ODD until it hitches into place. **12**
Connect the data and power cables to the ODD.
* Note: To remove the ODD, please press the retaining clip, then pull the ODD forward. **13**
11. 5.25" to 3.5" Drive Bay Installation (Optional)
Secure the 3.5" HDD and bracket with screws. Slide the 3.5" HDD into the cage and secure it with screws. **14 15 16 17**



【External 3.5" Drive Bay Installation】

12. Press the clip and slide the 3.5" device into the FDD bay. Align the screw holes and secure it by the clip. **18**
Connect the data and power cables to the 3.5" device.
* Note: To remove 3.5" device, please press the FDD retaining clip, then push the 3.5" device forward.

【Internal 3.5" Drive Bay Installation】

17. Place the 3.5" HDD into the 3.5" HDD mounting area, secure it with screws and connect the data and power cables. **25 26**

【Cooling Fan Installation】 (Optional)

19. Front Fan Installation :
Attach the 90mm fan and fan holder to the front panel. **29 30**
Connect cables to the PSU or MB.
20. Rear Fan Installation
Place the 90mm fan at the rear panel and secure it with screws. **31 32**
Connect cables to the PSU or MB.

【Internal 3.5"/2.5" Drive Bay Installation】

13. Pull out the HDD tray. **19**
14. 3.5" HDD Installation
Place the 3.5" HDD on the tray and secure it by the side clip. **20**
15. 2.5" HDD Installation
Place the 2.5" HDD into the HDD tray and secure it with screws. **21 22**
16. Slide in the HDD tray back into HDD cage and connect the data and power cables. **23 24**

【Internal 2.5" HDD Installation】

18. Place the 2.5" HDD in the 2.5" HDD mounting area, and secure it with screws. Connect the data and power cables. **27 28**

【Installation Complete】

21. Remove the 5.25" or 3.5" cover if necessary. **33**
22. Equip the front panel & side panel. **34 35**