

Case Structure

- | | | |
|---|--|--|
| 01 3.5"/2.5" SATA HDD EZ-Swap Dock | 10 Front USB 3.0 Port | 19 140/120mm Rear Fan Bracket |
| 02 Top USB 3.0 Port | 11 LED HDD Indicator | 20 Motherboard Mounting Area |
| 03 iPhone & iPad & iPod Skidproof Pad | 12 Audio Ports (Earphone and Microphone) | 21 Quick CPU Cooler Installation Cutout Hole |
| 04 iPhone & iPad & iPod Charger | 13 Shock-Proof Stand | 22 Cable Management Area |
| 05 Headphone Hanger & Wire Roll-Up Storage | 14 Power Button | 23 PCI-E / PCI / AGP Expansion Slot |
| 06 Aluminum Side Panel | 15 140/120mm Front Fan Bracket | 24 Extended Graphics Card Support Bracket |
| 07 Tempered Glass Side Panel | 16 2.5" Drive Bay (Includes SATA HDD EZ-Swap Module) | 25 Power Supply Mounting Area |
| 08 5.25" Drive Bay | 17 3.5" Drive Bay (Includes SATA HDD EZ-Swap Module) | 26 Adjustable PSU Bracket |
| 09 USB3.0 Port (Supports iPhone & iPad & iPod charging) | 18 140/120mm Bottom Fan Bracket | |

Package Content

- | | | | | |
|--------------------------------------|-------------------------------------|---|----------------------------------|------------------------|
| 1. King Size Chassis x 1 | 2. User manual x 1 | 3. Headphone hanger x 1 | 4. Tempered glass side panel x 1 | 5. Accessories bag x 1 |
| a. Motherboard Copper Stand Off x 14 | b. Motherboard Stand-Off Socket x 2 | c. Motherboard/Extended card screw x 22 | d. 5.25" ODD/2.5" HDD screw x 14 | e. 3.5" HDD screw x 26 |
| f. Fan screw x 22 | g. Cable tie x 15 | h. USB 3.0 Connector x 2 | i. 3.5" 硬碟固定螺絲 x 26 | j. 風扇螺絲 x 22 |
| k. 準繩帶 x 15 | l. USB 3.0 轉接線 x 2 | | | |

机体结构

- | | | |
|---|------------------------------|-----------------------------|
| 01 3.5"/2.5" SATA硬碟更換插座 | 10 前置USB 3.0端口 | 19 140/120mm 後風扇架 |
| 02 前置USB 3.0端口 | 11 LED硬碟指示燈 | 20 主機板安裝區 |
| 03 iPhone & iPad & iPod 防刮墊 | 12 音響接口 (耳機及麥克風) | 21 快速CPU散熱器安裝孔 |
| 04 iPhone & iPad & iPod 充電器 | 13 防震防塵架 | 22 線材管理區 |
| 05 耳機掛架及線卷收納 | 14 電源按鈕 | 23 PCI-E / PCI / AGP 介面卡擴充槽 |
| 06 雙面全鋁側板 | 15 140/120mm 前置風扇架 | 24 延長型顯示卡支撐架 |
| 07 雙面強化玻璃側板 | 16 2.5" 磁碟架 (含SATA HDD 易換模組) | 25 電源供應器安裝區 |
| 08 5.25" 磁碟架 | 17 3.5" 磁碟架 (含SATA HDD 易換模組) | 26 可調式電源供應器支撐架 |
| 09 USB3.0 端口 (支援 iPhone & iPad & iPod 充電) | 18 140/120mm 下置風扇架 | |

包裝內容

- | | | | | |
|---------------------|---------------|--------------------|----------------------------------|---------------------|
| 1. King Size 機殼 x 1 | 2. 使用手冊 x 1 | 3. 耳機掛架 x 1 | 4. 強化玻璃側板 x 1 | 5. 零件包 x 1 |
| a. 主機固定螺絲 x 14 | b. 主機板柱套筒 x 2 | c. 主機板固定螺絲 x 22 | d. 5.25" 光碟機 / 2.5" 磁碟架固定螺絲 x 14 | e. 3.5" 硬碟固定螺絲 x 26 |
| f. 風扇螺絲 x 22 | g. 準繩帶 x 15 | h. USB 3.0 轉接線 x 2 | | |

IN WIN

CONTEMPORARY & INNOVATIVE
www.inwin-style.com



User Manual 使用手冊

Specifications

Case Type	Open-Air Chassis
Material	2~4 mm Aluminum Metal Plate
Drive Bays	External: 3.5" x 1 Internal: 3.5" x 6 (or 3.5" x 4 + 2.5" x 2), 2.5" x 2 (Includes SATA HDD EZ-Swap Module x 8)
M/B Form Factor	HPTX (15" x 13.6"), XL-ATX, SSI EEB, SSI CEB, E-ATX, ATX, Micro-ATX
Power Supply	ATX12V, PSII (Up to 200mm)
External Port	Front Port: USB3.0 x 6, HD Audio Top Port: USB3.0 x 2 iPhone & iPad & iPod Charger 3.5"/2.5" SATA HDD EZ-Swap x 1
I/O Expansion Slot	Expansion Slot x 11 (Up to 420mm)
Thermal Solution	Supports 140/120mm Front Fan x 2 Supports 140/120mm Rear Fan x 1 Supports 140/120mm Bottom Fan x 2
Dimensions (HxWxD)	715 x 265 x 738 mm (28.1" x 10.4" x 29")

* Product specifications are subject to change without prior notice.

規格

機殼形式	通空式機殼
材質	2~4 mm 鋁合金
外殼尺寸	715 x 265 x 738 mm x 1
磁碟裝置	內建: 3.5" x 6 或 (3.5" x 4 + 2.5" x 2), 2.5" x 2 (含 SATA HDD 易換模組 x 8)
主板相容	HPTX (15" x 13.6"), XL-ATX, SSI EEB, SSI CEB, E-ATX, ATX, Micro-ATX
電源供應器	通用 ATX12V, PSII 規格 (總長兼容: 200mm) 前置: USB3.0 x 6, HD Audio 上置: USB3.0 x 2
外部輸出/入埠	iPhone & iPad & iPod 快速充電 3.5"/2.5" SATA HDD EZ-Swap x 1
介面卡擴充槽	介面卡擴充槽 x 11 (總長兼容: 420mm)
散熱系統	支援 140/120mm 前置風扇 x 2 支援 140/120mm 後風扇 x 1 支援 140/120mm 下風扇 x 2
尺寸 (高x深x寬)	715 x 265 x 738 mm (28.1" x 10.4" x 29")

* 產品規格如有變更, 恕不另行通知。

Notices

1. Please follow the user manual for installation.
2. While installing the computer components, please use the antistatic precautions to prevent ESD (electrostatic discharge) damage. It can cause injury to the installer and damage to the machine. Incorrect installation may burn the motherboard and other components.
3. To avoid any damages, please do not use product for any purpose other than its intended use.
4. Any modification may damage the product.
5. Please remove all internal devices before shipping or moving. (Including power supply, hard drive, CD-ROM, motherboard, CPU and etc.)

Warranty

For more detailed warranty information, please visit the In Win retail website at www.inwin-style.com.

* The actual product is subject to change without prior notice. In Win Development Inc. reserves the right to make final modifications.

注意事項

1. 請確實遵循本使用手冊之指示進行安裝!
2. 安裝電腦產品的過程中, 請戴上靜電環及手套進行安裝, 否則可能會導致人員及機器的傷害與損壞。錯誤的接頭安裝, 嚴重時可能導致主板及這些零件燒毀。
3. 請勿使用錯誤方法進行操作或採取指定範圍以外之用途, 以免導致本產品及電腦相關裝置損壞。
4. 請勿對本產品進行改裝使用, 以免發生故障。
5. 如前維護, 請先卸下機殼內所有裝置, 包含電源供應器、硬碟、光碟機、主板、散熱器等, 以免造成本產品及電腦相關裝置損壞。

保固範圍

本產品之保固範圍及內容等相關資訊, 請至迎風網於 www.inwin-style.com 查詢。

* 產品請以實際出貨內容為準, 迎風科技保留最終修改權利。

1 Opening the Chassis



2 Power Supply Installation

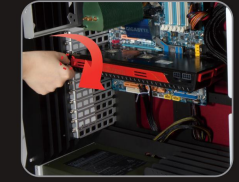
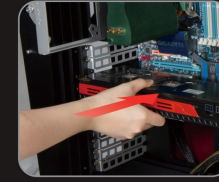
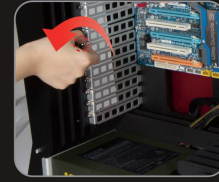


3 Motherboard Installation

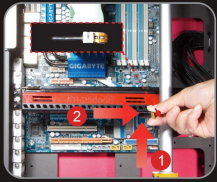


* Please remove the extended graphic card support bracket before assemble the motherboard

4 Add-On Card Installation(Include extended graphic card support bracket)



5 I/O Wires Installation

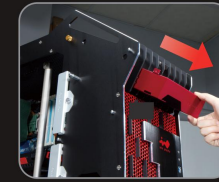
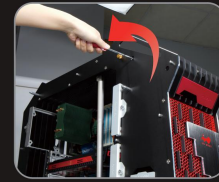


* rotary screw can help to regulate tightness

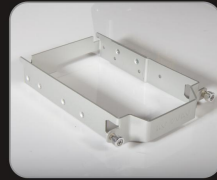
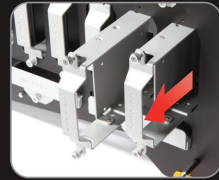
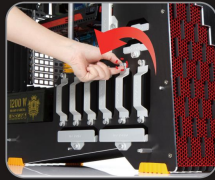
USB 3.0 Header	USB 3.0 Connector	HD Audio Header	Switch/LED Connector
Connect to rear panel USB ports	Connect to USB 3.0 internal connector	(MIC)Port 1L (1) (2) Ground (MIC)Port 1R (3) (4) Presence (Headphone)Port 2R (5) (6) Sense1-Ret Sense-Send (7) (8) Key(no pin) (Headphone)Port 2L (9) (10) Sense2-Ret	-(Blue) (White) (Blue) (White) (Brown) (White) -(Red) (White)

parts required :None

6 5.25", 3.5" and 2.5" Drive Bays Installation ▶ 6-1. ODD Installation



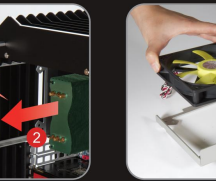
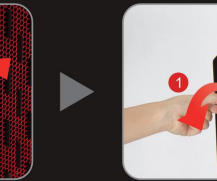
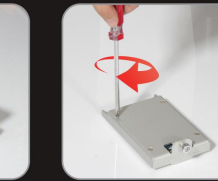
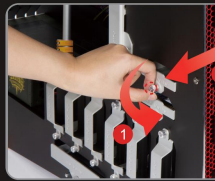
▶ 6-2. 3.5"/2.5" HDD Installation



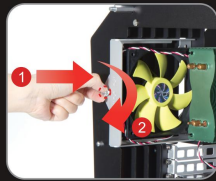
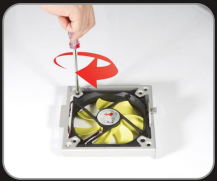
▶ 6-3. 2.5" HDD Installation

* Note: Limited to first two 3.5"/2.5" converter cage-2.5" 4833 36

7 Fan Installation (Option)



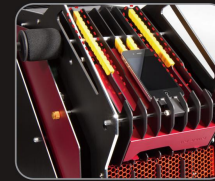
8 Cable Management



9 Completing Installation



* Note: Tempered side panel provided with product, user can switch side panels as desired



* Skidproof pad can be adjusted to desired position



* Headphone hanger, with wire roll-up storage function

