



# 101

TUF GAMING  
Mid Tower



## ASUS TUF GAMING Alliance Design

To capture the vibes of the TUF GAMING motherboards, In Win and ASUS have united to design the 101 TUF GAMING chassis. The exterior screams TUF, as the rugged steel enclosure is covered with a military design while donning the TUF GAMING Alliance emblem. Even the tempered glass side panel sports some war paint!



## Battlestation Armed and Ready for Combat!

The 101 TUF GAMING hosts a hidden power button, which discretely intermixes with the unique LED logo. To secure a clean front panel, the front I/O is positioned at the top, which grants easier access for PCs stored under desks or tables.



## Flash Your Rig's RGB Color Scheme!

The 101 TUF GAMING is equipped with an RGB In Win bezel on the front panel, and also possesses an RGB TUF GAMING Alliance PSU chamber cover. Customize and sync your rig to your preferred color scheme and lighting effects!



## Enhanced Thermal Solution

The 101 TUF GAMING supports up to six 120mm case fans for excellent cooling performance, and flexible cooling strategies. The 101 TUF GAMING is capable of supporting multiple liquid cooling radiators (120/240/360mm).



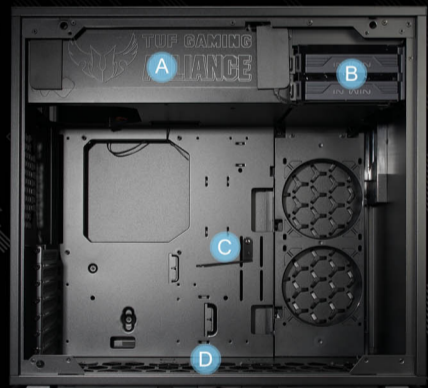
Quick release side buckle



3mm Tempered glass

## Accelerated Tool-less Design

The 101 TUF boosts a quick-release side panel to quickly swap and arm your rig with powerful hardware! Simply pull the tabs and lift up! Admire your battlestation through the TUF tempered glass



A Separate PSU chamber B 3.5" / 2.5" HDD tray  
C Extra graphics cards support holder D User Friendly Dust Filter



## Specifications

|   |   |
|---|---|
| Model   | 101 TUF GAMING  |
| Part Number   | IW-101TUFAMING  |
| Color   | Black   |
| Case Type   | Mid Tower   |
| Material  | SECC, ABS, PC, Tempered Glass   |
| M/B Compatibility                                       | 12" x 10.5" ATX, Micro-ATX, Mini-ITX  |
| Expansion Slots   | PCI-E x 7   |
| Maximum Compatibility                                   | VGA Card Length : 421mm (Maximum)<br>VGA Card Length : 305mm (With Side Radiator)<br>CPU Heatsink Height : 160mm    |
| Front Ports   | 2 x USB 3.0<br>HD Audio   |
| Internal Drive Bays                                     | 2 x 3.5"<br>2 x 2.5"<br>(Max. up to 4 bays)   |
| Thermal Solution Compatibility                          | 1 x 120mm Rear Fan / 120mm Radiator<br>2 x 120mm Side Fan / 240mm Radiator<br>3 x 120mm Bottom Fan / 360mm Radiator |
| Power Supply Compatibility                              | PSII : ATX12V<br>- Length up to 200mm   |
| Product Dimension(H x W x D)                            | 445 x 220 x 480 mm (17.5" x 8.7" x 18.9")   |
| Product Dimension(H x W x D) with screw & handle height | 445 x 226 x 480 mm (17.5" x 8.7" x 18.9")   |
| Package Dimension(H x W x D)                            | 532 x 282 x 506mm (20.9" x 11.1" x 19.9")   |
| Net Weight  | 7.85kg / 17.4lb   |
| Gross Weight  | 9.15kg / 20.2lb   |

\* Our products comply with RoHS regulation  
\* Specifications may vary based on different regions

